

28-4 Insects & Their Relatives

I. Insects and Their Relatives

A. Characteristics:

1. *One pair of antennae*
2. *Appendages that do not branch*

Ted-Ed: Why so many insects?

B. Habitat: *terrestrial, fresh and salt water*



II. Centipedes and Millipedes

A. Centipedes

1. Description: *Long, wormlike body; 1 pair legs/segment*
2. Lifestyle = *predator or carnivore*



B. Millipedes

1. Description: *Long, wormlike body; 2 pairs legs/segment*
2. Lifestyle = *decomposer or herbivore*



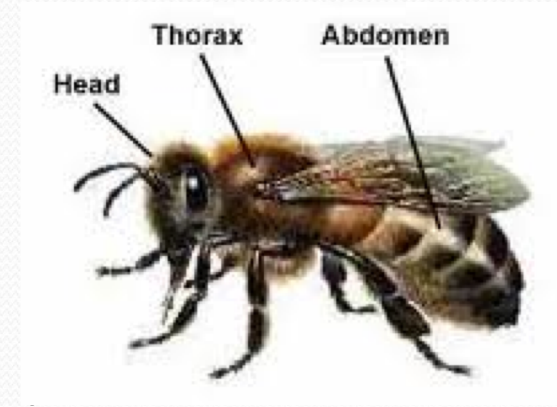
III. Insects

A. Characteristics:

1. *Body divided into 3 parts (head, thorax, abdomen)*

B. Feeding

1. **Why are the mouthparts so different in different insects? *They feed on a large variety of foods***
2. **Saliva contains specialized enzymes:**
 - a) Helps break down food
 - b) *Prevents blood from clotting*
(mosquitos)
 - c) *Change nectar into honey* (bees)



C. Movement

1. *Walk/jump*
2. *Fly*

D. Insect societies

1. **Society:** *Separate individuals that depend on one another for survival* [Video](#) & [Ted-Ed Video](#)
2. **Within societies, there is division of labor** [Ted-Ed Hexagons](#)

