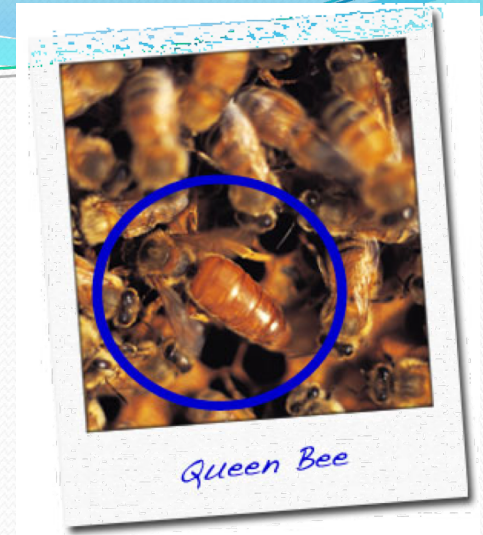


### 3. The 3 basic castes & their main function(s) are:

a) *Reproductive females (queens) – lay eggs*

b) *Reproductive males – fertilize the eggs*

c) *Workers – perform all non-reproductive tasks (care for eggs, gather food, build, maintain, and defend the colony's home)*



## **E. Insect communication**

### **1. Use:**

**a) *Sound***

**eg. cockroaches**

**b) *Visual signals***

**eg. firefly**

**c) *Chemical signals***

**eg. stinkbug**



**2. Functions of communication are:**

a) *Finding a mate*

b) *Convey information to members of the colony*



**3. Pheromone: *specific chemical messenger that affects the behavior and/or development of other individuals of the same species***

# 28-5 How Arthropods Fit into the World

## I. How Arthropods Fit into the World

### A. Ecological role:

1. *Sources of food* [Video](#)
2. *Pollinate plants*

### B. Contributions to human life:

1. *Produce products (ex. Honey, silk)*
2. Medical and scientific research



## C. List 3 things that arthropods damage:

1. Crops [Ted Ed Cicadas](#)
2. Livestock [Ted Ed The Loathsome Mosq.](#)
3. Property (structures, clothes, etc)

Watch:

[The Death of Bees?](#) And/Or [Honeybee Decline](#)